

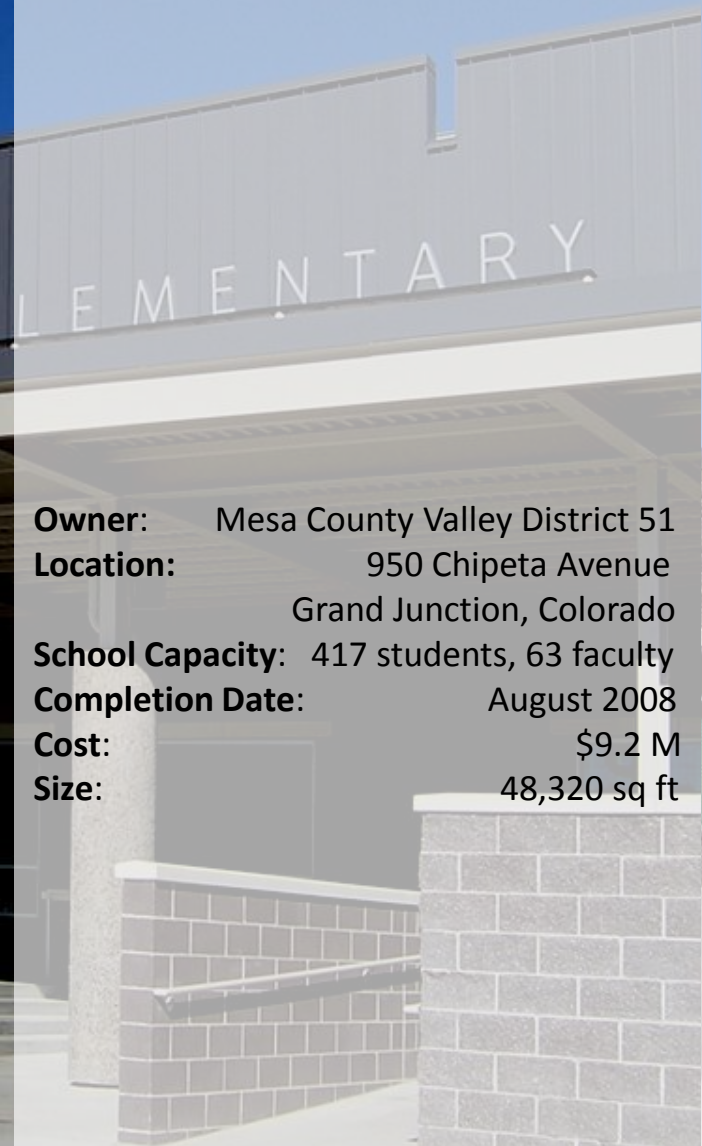
Chipeta Elementary

Grand Junction, Colorado

**LEED Registered
seeking Silver or Gold
certification**

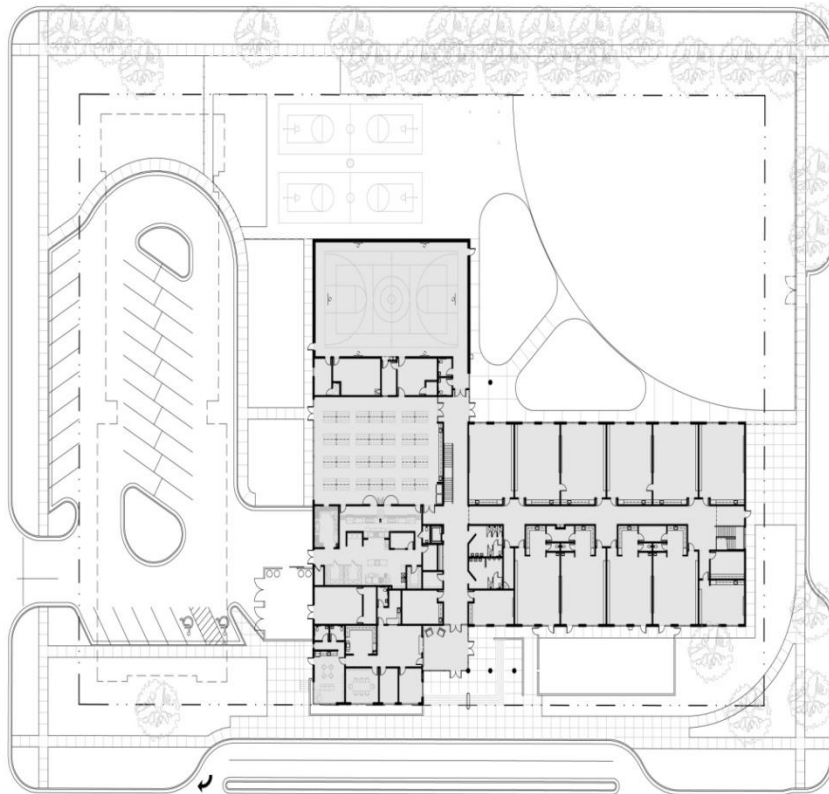


Owner: Mesa County Valley District 51
Location: 950 Chipeta Avenue
Grand Junction, Colorado
School Capacity: 417 students, 63 faculty
Completion Date: August 2008
Cost: \$9.2 M
Size: 48,320 sq ft



Chipeta Elementary

Grand Junction, Colorado



Sustainable Sites

- Built on pre-existing Columbine ES site
- Native plants
- 79% of usable site
- Created master plan to accommodate growth
- Coordination w/ city as a multi-use building and site
- Increased solar reflectance of hardscape to reduce heat island effect

Water Efficiency

- 30% water reduction
- Waterless urinals
- 1.1 gpf toilets
- Maxicom irrigation system



Chipeta Elementary

Grand Junction, Colorado



Energy and Atmosphere

- Positioned to the East and West to maximize solar gain during winter
- Commissioning utilized
- Occupancy sensors
- 35% of electric Energy provided by Xcel Energy's Wind Source Program.
- 3.5% of electric energy from 10 kW PV system.
- 0.648 kWhr/sq.ft./month
- 75 kBtu/sq.ft./yr. (Modeled)
- 50+ kBtu/sq.ft./yr. (Actual)
- Roof – R30 insulation value
- Exterior wall – R19 insulation value



Materials & Resources

- At least 50% C&D waste diverted from landfill
- 15.8% recycled content for structure
- At least 10% regionally manufactured building materials
- Use of FSC (Forest Stewardship Council) wood
- Highly reflective TPO roofing membrane
- Fly ash used as cement replacement
- Indoor color scheme to compliment Colorado National Monument

Chipeta Elementary

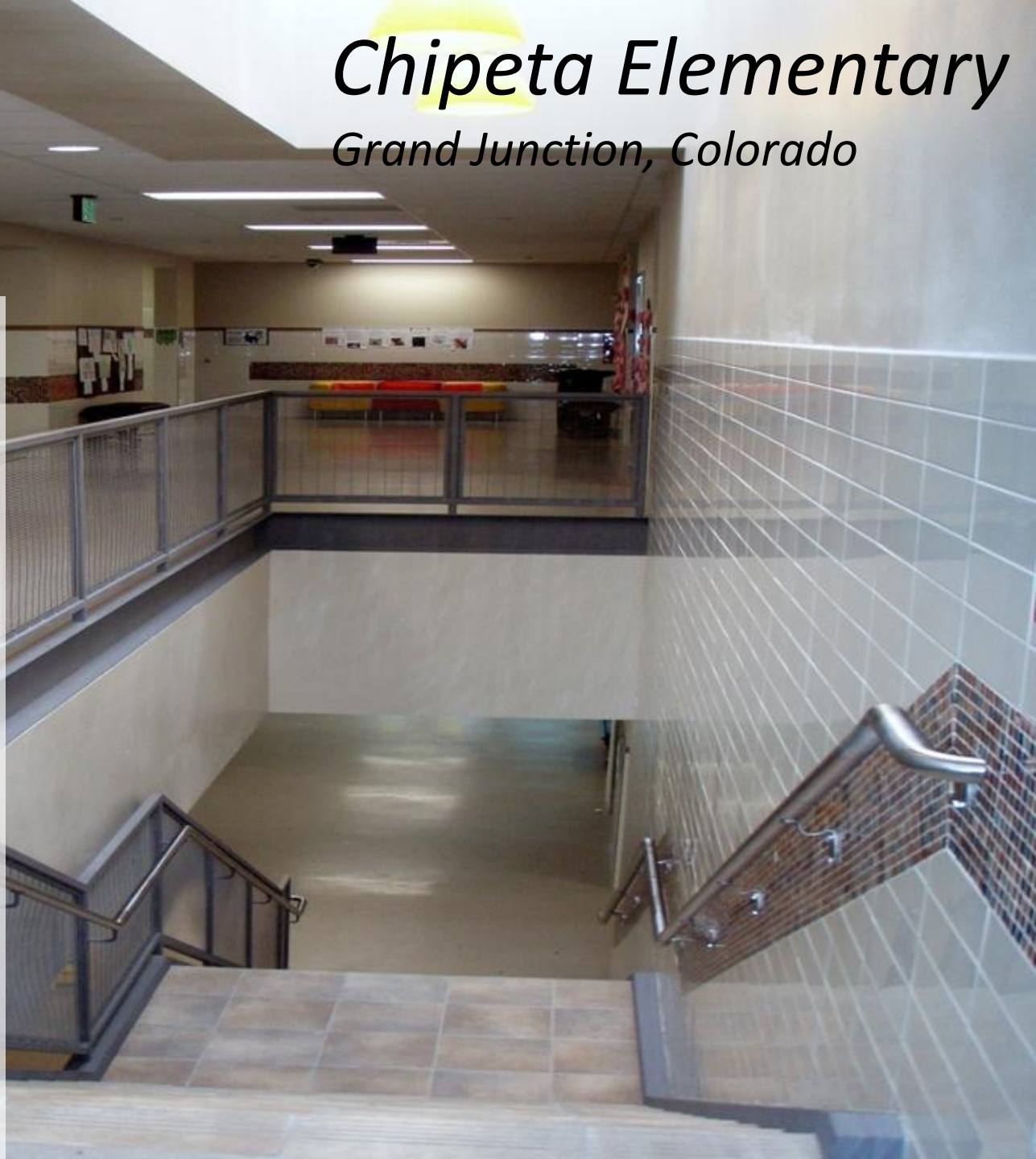
Grand Junction, Colorado

Chipeta Elementary

Grand Junction, Colorado

Indoor Environmental Quality

- Low VOC materials meeting Green Seal standards
- Duo-level lighting
- 2 large windows in every classroom
- Skylights in gym
- View of CO National Monument from library
- Room controlled airflow, temperature and lighting
- Ventilation monitoring system
- IAQ construction plan including 2 week flush out





Chipeta Elementary

Grand Junction, Colorado

“Students from the old school were brought over during construction to learn about green building and their new school.”
- Cal Clark, Director of Maintenance and Operations



Chipeta Elementary

Grand Junction, Colorado

"I haven't had to turn on the lights all day. The best is not listening to the hum of those electric lights."

- Allen Russell, P.E. Teacher, GJ Sentinel Interview

Project Team

Architect:	Chamberlin Architects
Site/Struc. Eng:	Lindauer-Dunn Structural Engineers
Mech. Eng:	MKK Engineers
Elect Eng:	MKK Engineers
Civil Eng:	Drexel, Barrell & Company
Contractor:	FCI Constructors, Inc.
Commissioning:	E-Cube, Inc.
Energy Design:	Xcel Energy & Weidt Group

